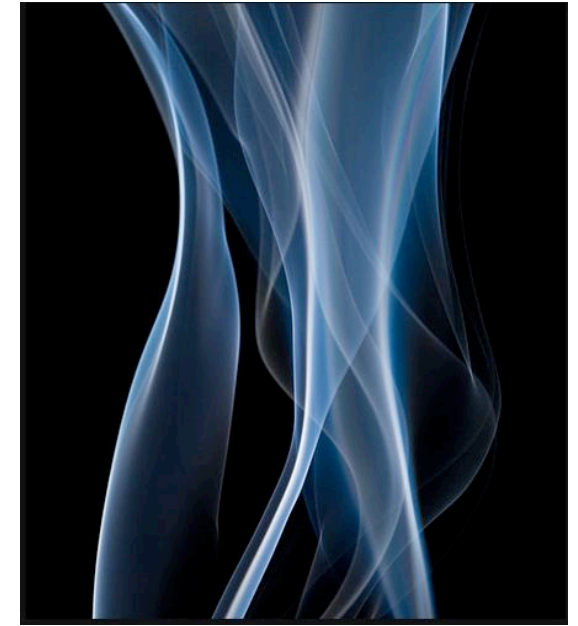




# FLUID FORM

The inspiration for this model came from the idea of capturing smoke and suspending it. This brought to mind the Anzac bridge in Sydney, a cable-stayed bridge in which the cables support the bridge deck the further out it gets from the towers. (Wikipedia, 2012). The idea of the cable used in the bridge design was taken and applied to the model as a straight line of steel piercing the vellum and stabilizing the form of the curve whilst suspending it as if like a bridge, and the vellum in turn holds the wire in its place. The cold hardness of the steel contrasts against the flexible and seemingly delicate nature of the

vellum that forms the curve. From the smoke, the fluid form was taken, and layers of vellum shaped in a subtle curve were built up to capture the essence of the precedent, the way it creates sinuous forms that look three dimensional and almost opaque yet still transparent due to the way it scatters light as they flow through the air. (Wikipedia, 2012). The vellum is thin, not quite opaque and easily manipulated into a curved form, while the wire is solid and rigid in its line evoking a sense of the cabling used in the bridge and the white filmy quality of the smoke.



Abstract smoke macro background  
(dgilder, 2009)



Anzac bridge, Sydney  
(Sardaka, 2008)

*"We're more into sort of fluid structures that are simultaneously the most efficient, the most beautiful, the most engineered. You know what I mean? We like the balance you can get in there."*

Sean Booth